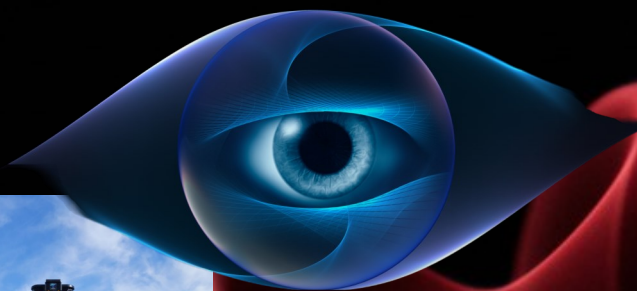


Intell-Eye Eclipse

Solar Powered Hybrid Surveillance System



FEATURES

Telescopic Mast
Option

200AH AGM
Battery

10 mile 5Ghz Wi Fi
Range

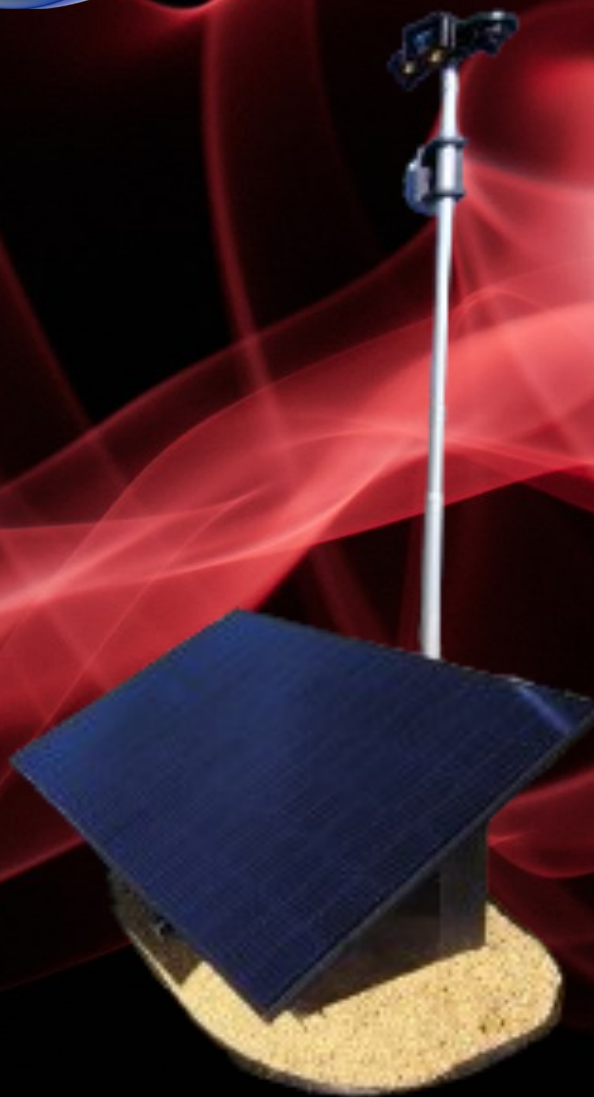
410 Watt Solar
panel

Ultra Fast MPPT
solar charger

24 Hours + run
time with no sun!

All internal wiring

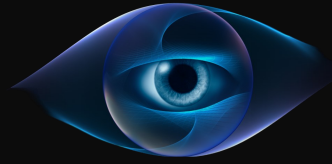
12 Ft Mast Std.



Solar Research Technologies offers several camera options from Verkada, Rhombus and others including full PTZ for optimal surveillance requirements. Your system is fully ready for DVR or Cloud camera data storage.



Intell-Eye Eclipse Hybrid Surveillance System



Specifications

2024 Solar Panel Upgrade!

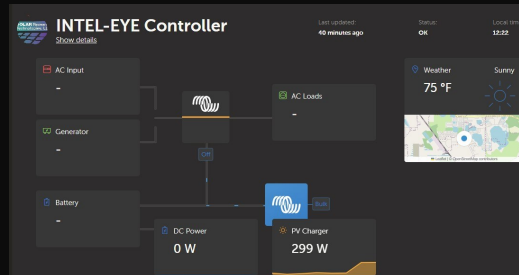
- Total Energy: 2KW per 5 hour day avg
- All black Solar4America 410 watt solar panel standard!

Detailed energy management dashboard with graphical display, GPS Location and analytical reports via web portal w/ optional Victron Cerbo GX!

Controller System Upgrades for 2024!

30 Amp MPPT Solar Charger w/ Lightning Surge Protection built in

- Backup Power for 48hours + under no charge conditions



12.5" x 10" x 10" x 10" x 10" x 10"

Twin PTZ camera options for 360 degree horizontal, 0-90degrees vertical field of vision!

Camera system technologies:

- Night Vision Range 320 Feet (POE Camera Option)
- Gen2 5 GHz AC Antenna Range 10 Miles.
- Built in support for 4GLTE, Wi-Fi and POE camera systems to choose from.
- Multiple systems can be linked together for a network and large area coverage.



Ground System

- Manufactured with TIG welded, marine grade aluminum structure. Powder coated for maximum protection.
- Designed for portable or permanent Installation.
- **New for 2024!** Keyed Mast lock for extra security and vandalism protection.



Utilizing cutting edge 5GHz communications it is now possible to mesh as many as 60 units into a single network! Distance coverage is up to 10 miles point to point.

A fully matched, pre configured Bridge is furnished with our systems for the ultimate in data communications ability in remote environments.

